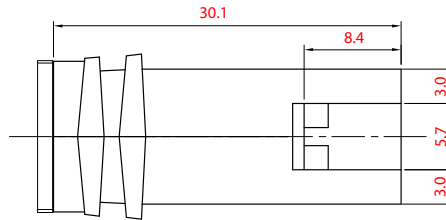
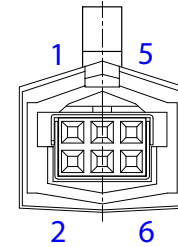
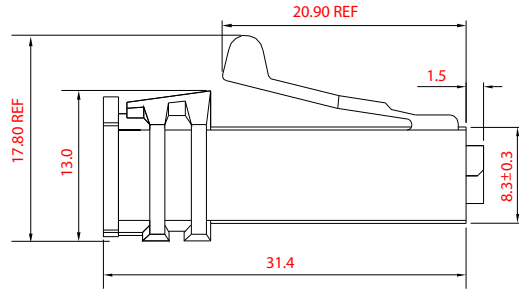
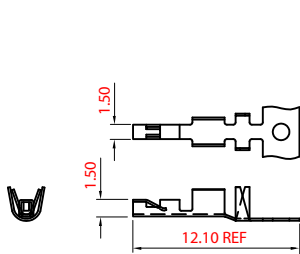




REVISIONS		
REV	DESCRIPTION	DATE
A	RELEASE FOR QUOTE	12/2006



Note:  
 1. All materials conform to EN Directive 2002/95/EC for RoHS compliance.  
 Electrical Characteristics:  
 Contact Resistance: Terminal 25m Max. and ground terminal 8m Max.  
 Insulation Resistance: 100M Min. at 500V DC.  
 Dielectric Strength: 750V AC/1 minute.  
 Insertion Force: 5.9kgf Max.  
 Withdrawal Force: 1.59 ~ 5.9 kgf  
 Latch Retention: 9.07 kgf Min.

UNLESS OTHERWISE SPEC'D DIM. ARE IN MILLIMETER. TOL. ARE: FRACTION DECIMAL ANGULAR ± .008 ± .008 1/2°				<b>CONQUEST TECHNOLOGY LIMITED</b>	
MATERIAL		APPROVALS	DATE	6 Pin Powered USB, 2x3 Plug Connector w/Std. Latch, 5.2mm Exit Hole, Black - RoHS	
FINISH		DRAWN AuYeung	12/20/06	SIZE A	DWG. NO. 371253
DO NOT SCALE DRAWING				SCALE: N/A	REV A
				SHEET	1 OF 1